



CRIST S.A.

Gdynia, Poland

Power of experience



32 YEARS of experience

At CRIST we combine the state-of-the-art technology with know-how based on our 32-years long experience.

We have been building vessels, platforms and offshore constructions, supporting our customers in achieving their business goals. We combine the latest technology with our experience to deliver tailor-made solutions.

Today CRIST is a leader amongst European shipyards and one of the major players on the market of maritime constructions, specializing in steel structures and turn-key vessels. We cooperate with customers and shipyards all over the world.

Over 400 completed projects, 1500 employees and workers, hi-tech production lines, latest technology implementation, a capacity to process over 50 thousand tons of steel a year

- this is

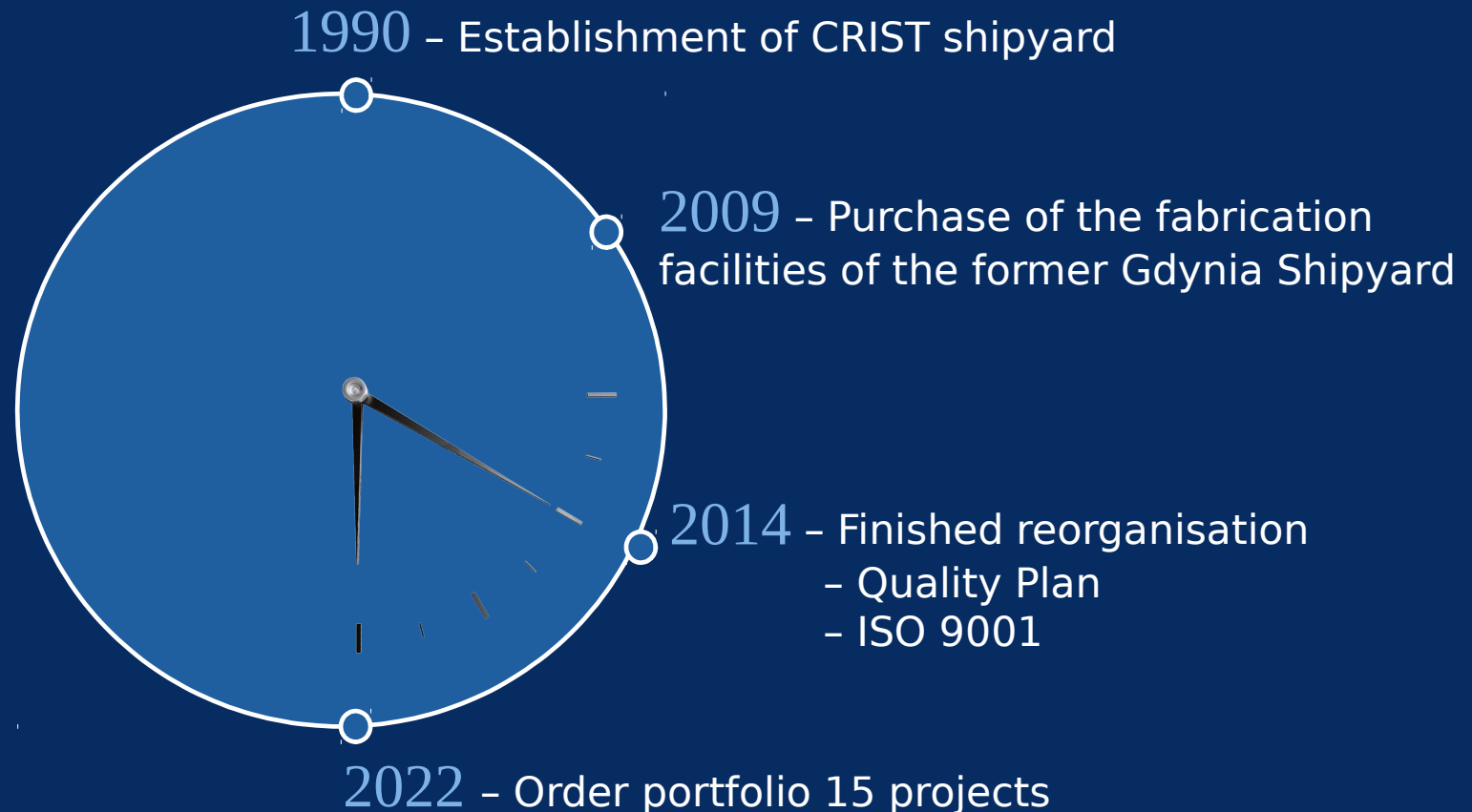
CRIST.

32 YEARS of experience

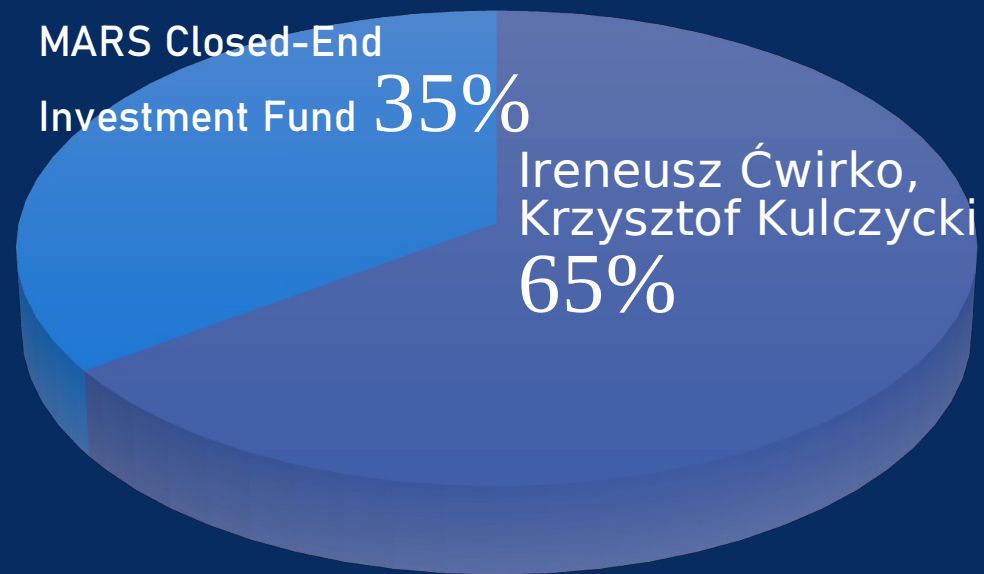
MORE THAN 400 PROJECTS
ACCOMPLISHED

Main prizes from last 5 years

Date	Prize
2021	Exporter of the Year to France competition
2020	Maritime Economy Lighthouse in the Maritime Technology Leader category
2019	Polish exporters to France
2018	„ELEKTRA” Vessel of the Year by Marine Propulsion Awards 2018
2018	Among the best Polish exporters to France
2018	„Amber Egg” for the construction of the P310 Elektra ferry
2017	Among the best Polish exporters to France
2017	“Gold Oxery” for Ireneusz Ćwirko i Krzysztof Kulczycki for consistency and determination in building their own businesses over the last 27 years



OWNERSHIP



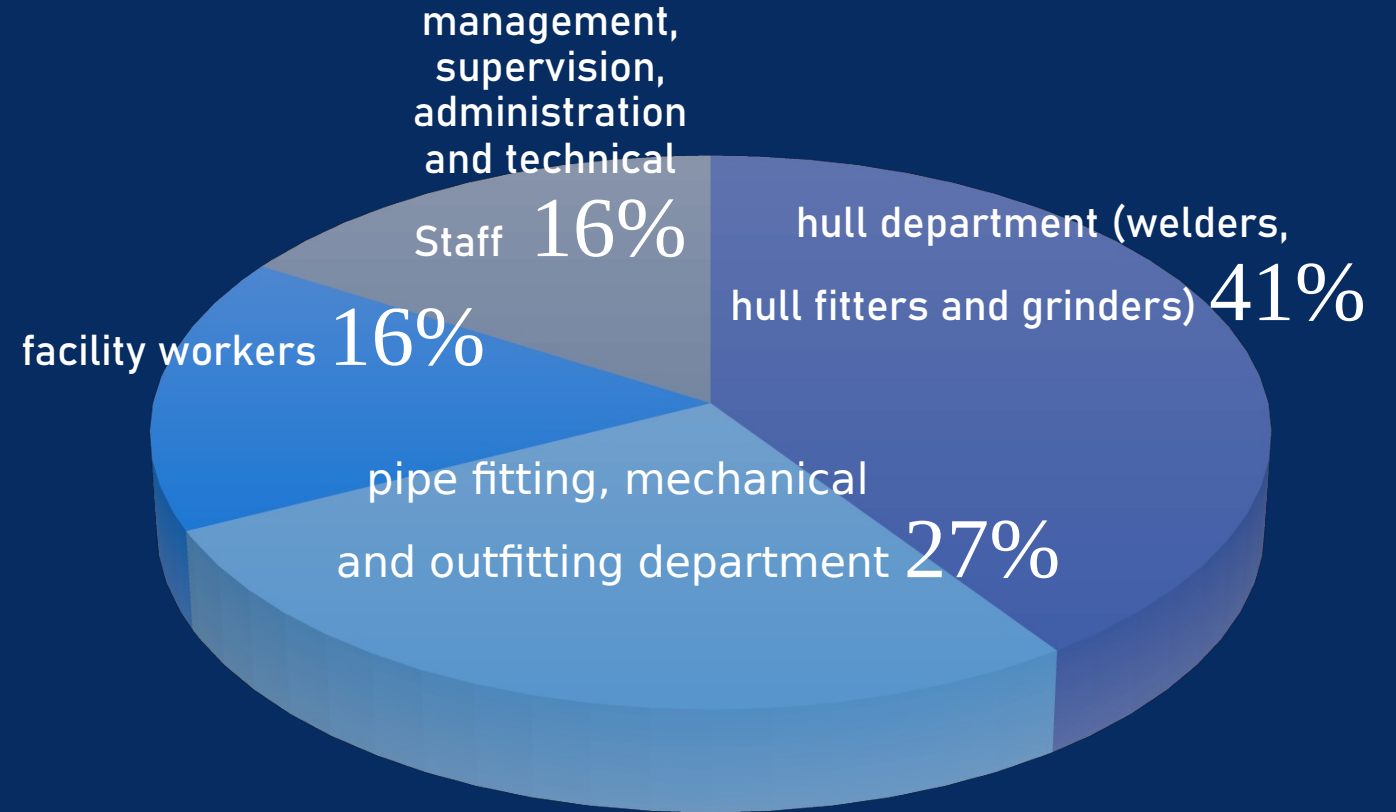
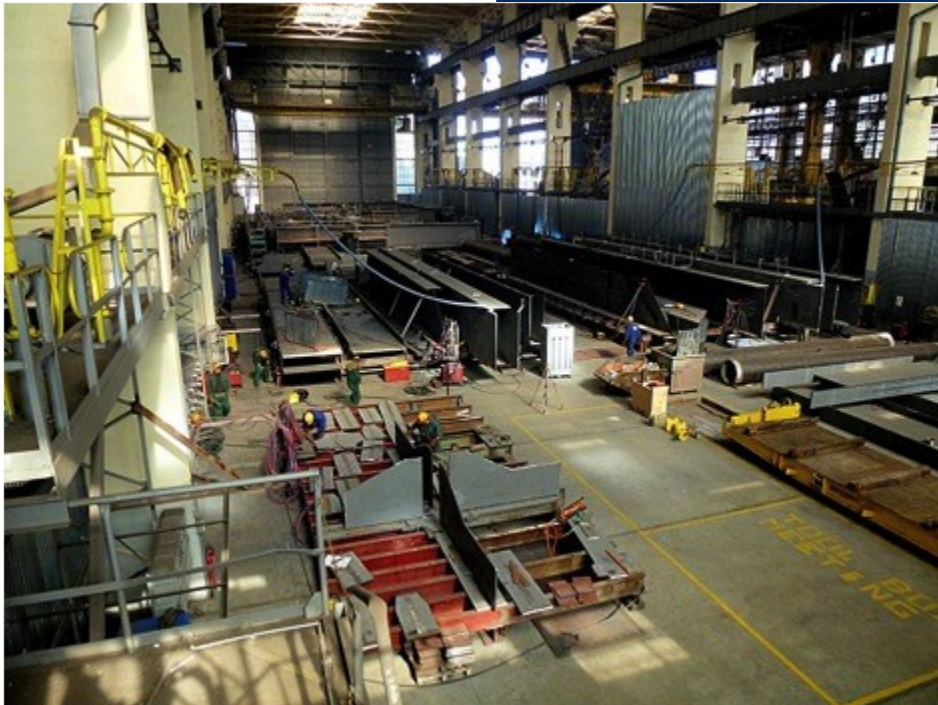
Incorporated in 1990, CRIST initially started as partnership of two industry specialists: Mr. Ireneusz Ćwirko and Mr. Krzysztof Kulczycki, advanced to join stock company in 2010.

We are growing the business ever since.

MARS FIZ has been operating since the second half of 2010, authorized by the Polish Financial Supervision Authority.

Yearly turnover of CRIST S.A. is reaching more than 100 mln euro.

EMPLOYMENT

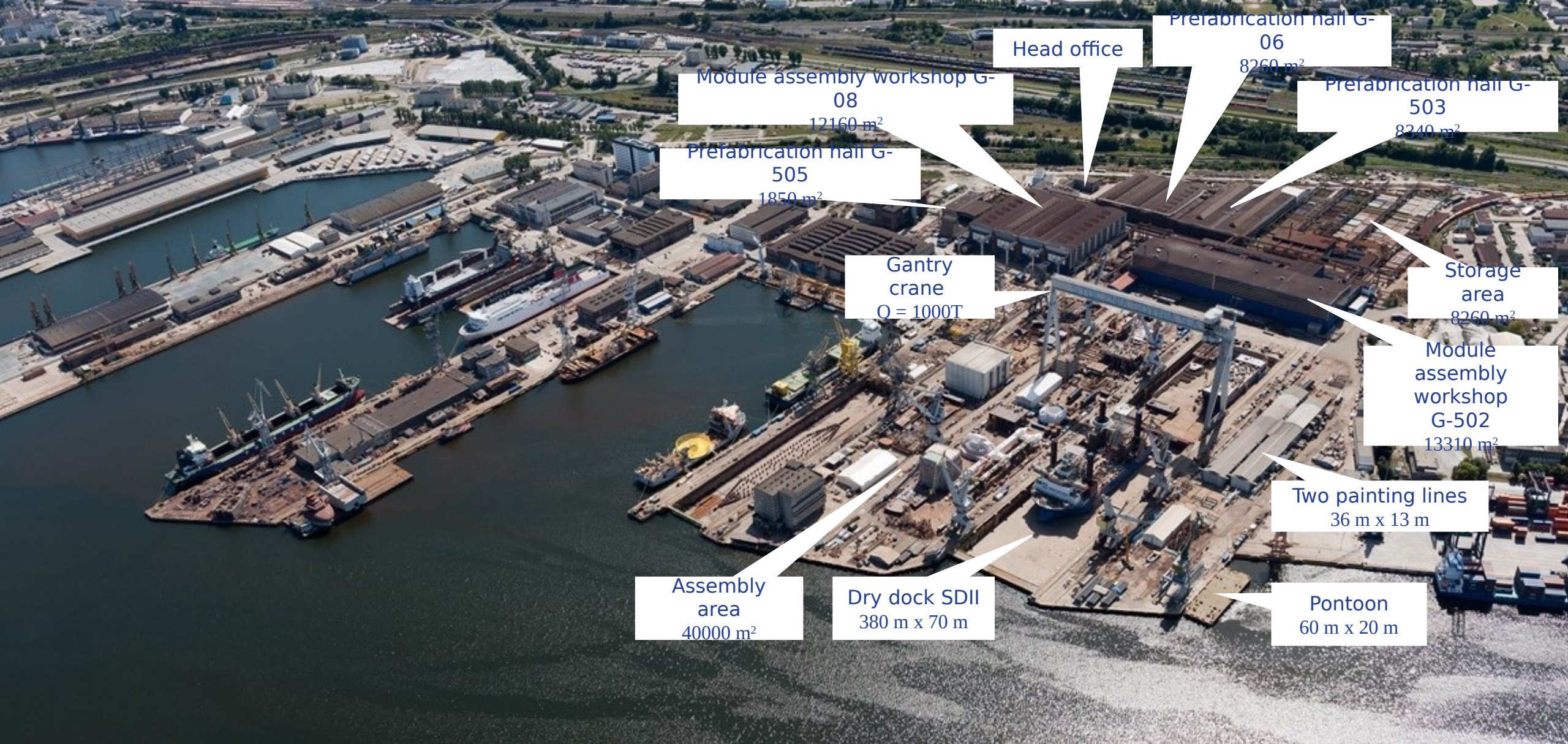


The total employment can exceed 1500 employees.
2000 with local cooperation

LOCATION



The production site of CRIST occupies over 28 ha next to the port of Gdynia. As a warm water area, with good navigation conditions and no tides, it is easily accessible from the sea. The proximity of the international Gdansk airport, the A1 highway as well as the ferry connections with Scandinavia are convenient for our customers.



Module assembly workshop G-08
12160 m²

Prefabrication hall G-505
1850 m²

Head office

Prefabrication hall G-06
8260 m²

Prefabrication hall G-503
8240 m²

Gantry crane
Q = 1000T

Storage area
8260 m²

Module assembly workshop G-502
13310 m²

Two painting lines
36 m x 13 m

Assembly area
40000 m²

Dry dock SDII
380 m x 70 m

Pontoon
60 m x 20 m

WE WORK HERE

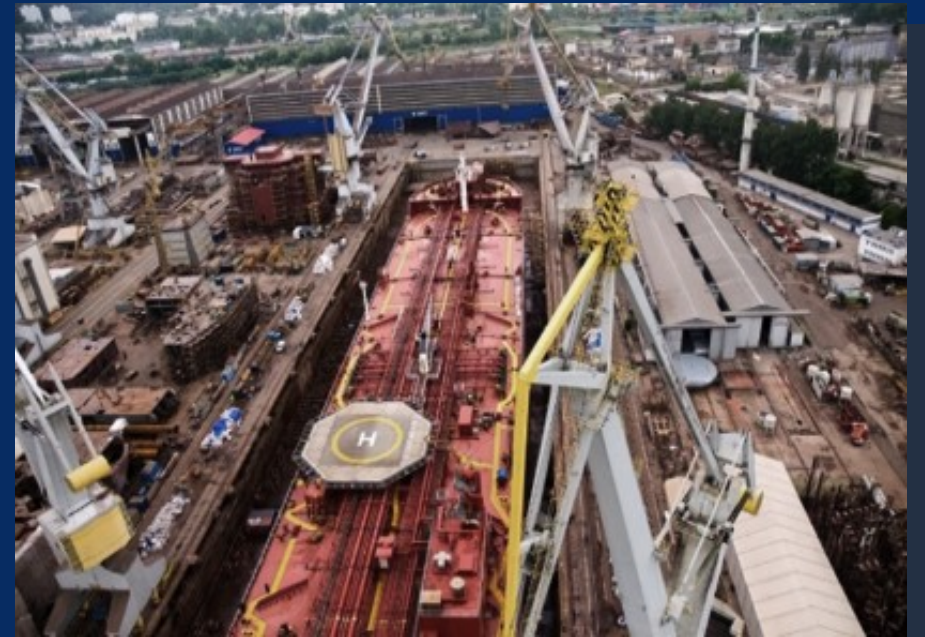
FACILITIES



KONE Cranes
Lifting capacity: Each of 150 tons



GANTRY Cranes
Lifting capacity: 1000
t
Span: 153 m
Height: 106 m



DRY DOCK
Length: 380 m
Width: 70 m
Depth: 8 m



FACILITIES

- Production Capacity 4'000 tonnes / month
- Total Gdynia Estate Area 285'812 m²
- Sheltered Flat Sections Prefab. 5'660 m²
- Sheltered Production Area 36'460 m²
- Sheltered Structure Prefabrication 26'653 m²
- Sheltered Pipe Shops Area 6'490 m²
- Steel Structure Fabrication Sites 3'880 m²
- Blocks Assembly Sites 40'750 m²
- Warehouses/Offices/Buildings 80'903 m²
- Dry Dock (SDII) 381m x 71m (27 318 m²)
- Indoor Cranage Capacity from 3 up to 120 tonnes
- Outdoor Cranage Capacity 4 KONE Cranes @ 150 tonnes each
- Dry Dock Gantry Crane 1'000 tonnes / span:153 m
- Wharfs with Crane Coverage 297 m in total
- Section Painting Lines 2 lines each; 12m x 35m x 7m
- Hydraulic Presses for Steel 3 PCs. (from 450T to 1000T)
- Motorized Transporter Platform up to 320 tonnes
- Technological Transport Trailers 8 PCs
- Forklifts up to 18 tonnes
- Floating Pontoons up to 3'500 tonnes

OUR PRODUCTION PROFILE

Offshore structures

- Heavy Lift Jack-Up Vessels and wind turbines installation Barges
- Offshore Construction Vessels (OCV)
- Platform Supply Vessels (PSV)
- Anchor Handling Tug Supply Vessels (AHTS)
- Construction sub-sea
- Foundations for wind turbines

Vessels

- Fishing vessels
- Tugs
- Ferries
- Container vessels
- Research vessels

Hydrotechnical structures

- Gates
- pontoons
- Caissons
- Transformer platforms



JACK-UP BARGE B 392 „THOR”



MAIN DIMENSIONS:

Length — 70.00 m

Width — 40.00 m

Height — 6.00 m

LEG DATA:

Length — 82.00 m

Diameter — 3.70 m

Spudcans \varnothing — 8.50 m

OPERATIONAL CONDITIONS:

Draft (without spudcans) — 3.50 m

Draft (with spudcans) — 7.40 m

Operating depth — 50.00 m

Payload — 3.300 t

Deck load — 15.00 t/m²

Hoisting capacity — 10.000 t

Hoisting speed — 1.20 m/min

2 Moon Pools — \varnothing_i 0.90 m

CRANAGE:

Heavy lift crane Liebherr BOS 14000

Crane capacity — 450 t/15.00 m

MOORING WINCHES:

4 single winches pull 30.00 t/each

HLJV - NB 142 „INNOVATION”



MAIN DIMENSIONS:

Length hull (overall) — 147.50 m

Breadth hull — 42.00 m

Depth hull — 11.00 m

OPERATIONAL CONDITIONS:

Water depth for jacking — 50.00 m

- Up to 65 m (with leg extension)

Significant wave height for jacking
and DP - Up to 2.00 m

Wind Speed for crane operation — 18 m/s

DP2 according to GL Class

JACKING SYSTEM:

Number of Legs — 4

Leg cross section — Lattice leg

Jacking system — Rack and pinion

Jacking speed — Up to 1 m/min

Jacking capacity — 30.000 ton

HELIDECK:

D = 20.88 m, suitable for Sikorsky S92

THRUSTER AND PROPULSION:

4 x 3500 kW aft azimuth thr.

3 x 2800 kW bow tunnel thr.

HMV-NB 130 „VIDAR”



MAIN DIMENSIONS:

Length — 140.40 m

Width — 41.00 m

Height — 9.50 m

LEGS AND SPUD CANS:

Length — 90.00 m

Diameter — 4.80 m

Spudcan area — 125.00 m²

OPERATIONAL CONDITIONS:

Draught — 6.30 m

Operating depth — up to 50.00 m

Load capacity — up to 6.500 t

2 Monn pools — Ø 0.8 m

JACKING SYSTEM:

Lifting capacity — 24.500 t

Lifting speed — up to 0.83 m/min

MAIN CRANE:

Offshore crane Liebherr CAL 45000

1200 Litronic

HEAVY LIFT JACK-UP BARGE NB 105 „ZOURITE”

*for construction of offshore viaduct
at the island Reunion*



MAIN DIMENSIONS:

Length — 106,5 m

Width — 49 m

Design draft — 5,95 m

Maximum air draft (legs up) — 51,65 m

Maximum payload — 4730 t

Assumed deadweight for design draft — 5550 t

4 main engines (diesel electric)

Combined mass of the hull — about 5000 tons.

OPERATIONAL CONDITIONS and CRANAGE:

4 propellers

Winch with automatic winch with automatic tension, winch

DP1

Two gantry cranes (total lifting capacity

5000 tons)

JACKING SYSTEM:



VINCI
CONSTRUCTION

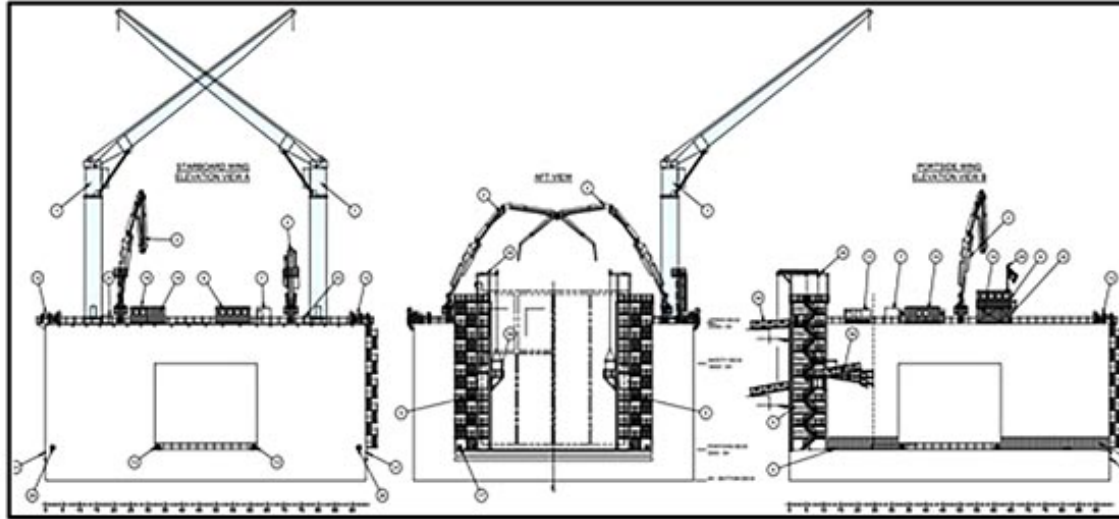
GRANDS PROJETS

BOUYGUES
TRAVAUX PUBLICS

demathieu bard

DODIN
CAMPENON
BERNARD

FLOATING DOCK B 56



MAIN DIMENSIONS:

Length — 58.40 m

Breadth moulded— 49.28 m

Depth at upper deck — 25.50 m



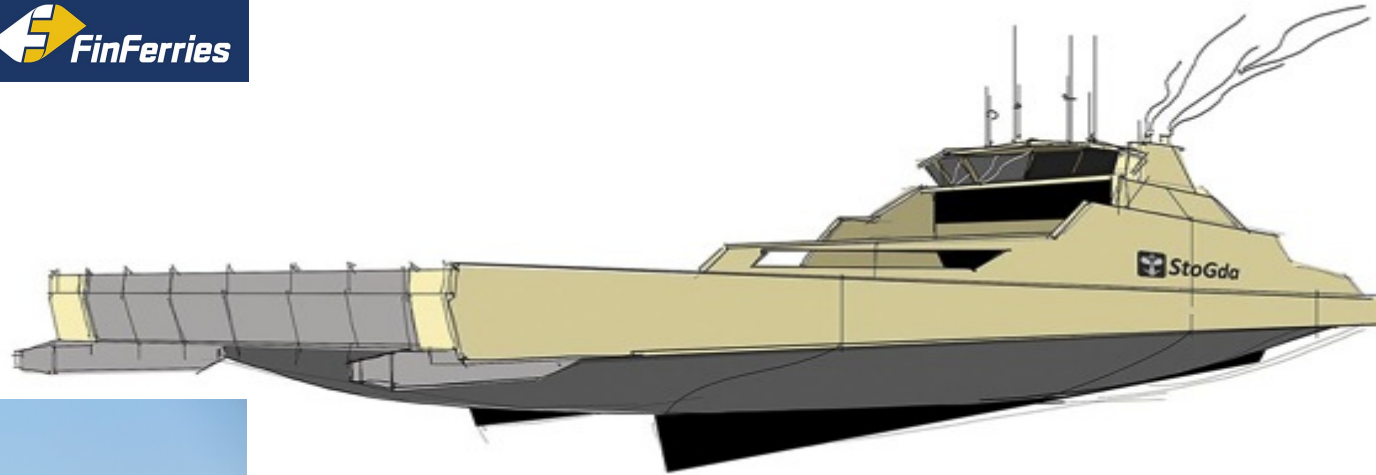
The Floating Dock is specially designed for the construction of concrete caissons and is designated to build a new shore lane in Monaco.



DOUBLE-ENDED FERRY P 310 „ELEKTRA”



**marine
propulsion**
& auxiliary machinery



MAIN DIMENSIONS:

Length overall — 97,92 m
Length of car deck — 93,30 m
Breadth moulded — 15,20 m
Draught design — 3,500 m
Draught scantling — 3,550 m
Depth (up to m. deck) — 5,000 m
Lane meters — 450 m
Persons on board — 375
Speed — 11 kn

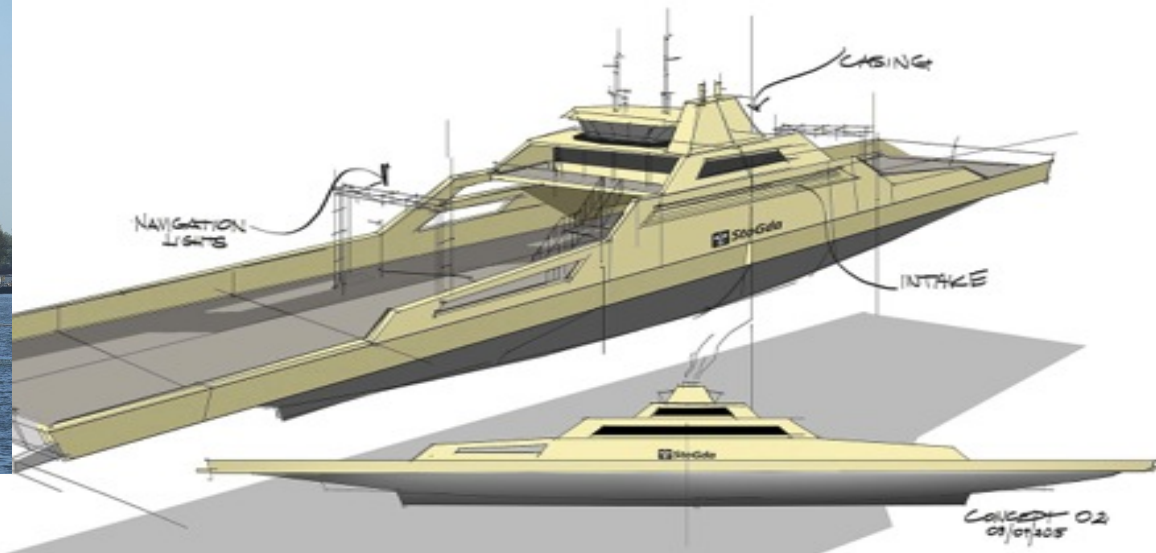
CLASS NOTATION:

+ 1A1 Car ferry B Battery (Power)
E0 Ice (1B) PET R3

PROPULSION:

Two 360o, contra rotating pitch (CRP)
azimuth thrusters,
Rolls Royce, 900 kW each, 1200 rpm

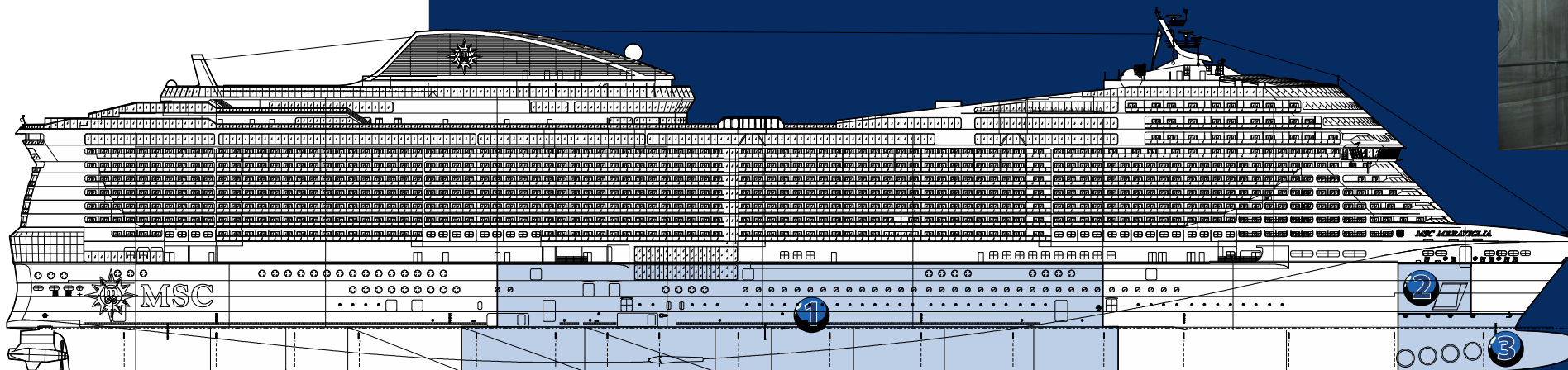
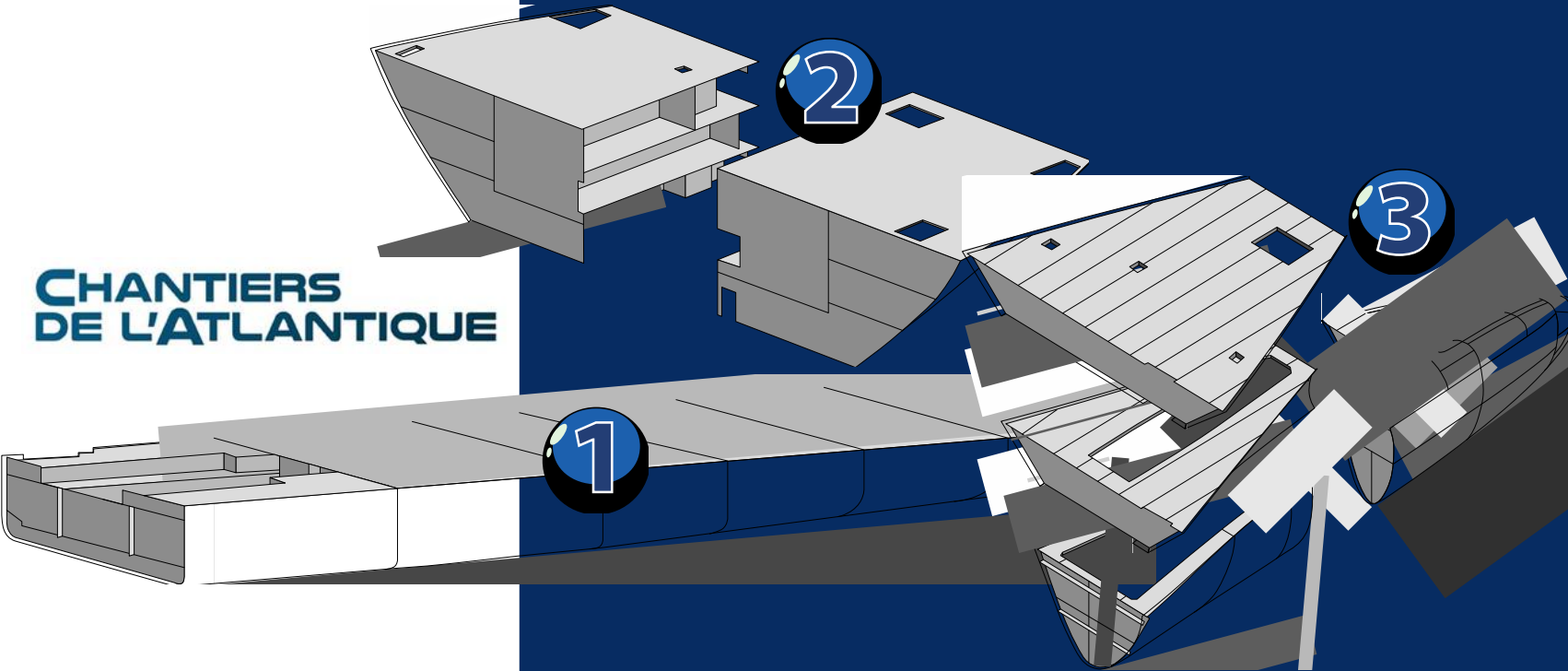
HYBRID ENERGY SYSTEM:



SHIP OF THE YEAR AWARD
Marine Propulsion Awards 2018
organized by the “Marine
Propulsion & Auxiliary
Machinery” magazine

FULLY EQUIPED FLOATING CRUISE BLOCKS

CHANTIERS
DE L'ATLANTIQUE



MAIN DIMENSIONS:

Total length of the largest block — 171
m

Weight — 10,500 tons

FEHMARNBELT FIXED LINK FLC

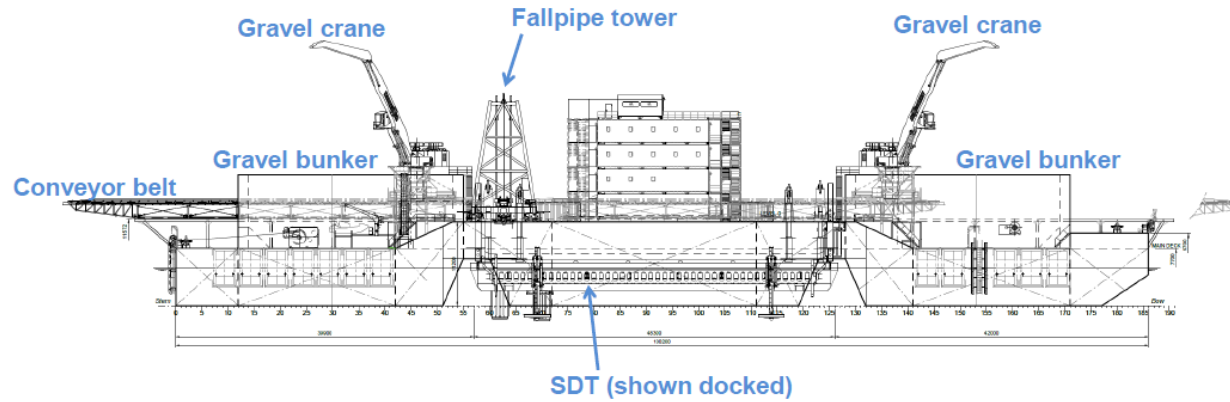
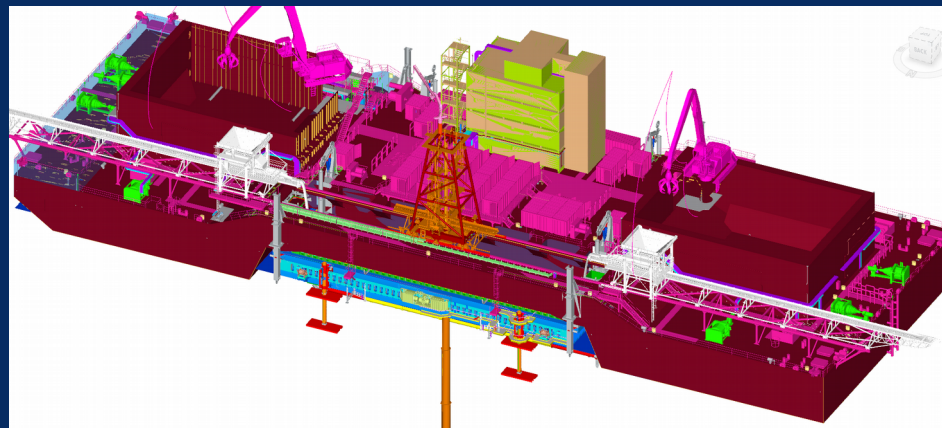


Figure 1 - Project location (source: Femern A/S)



Under construction – to be delivered in 2023

Length over all (with conveyor belt)	:	abt.	139.00 meters
Length over all (hull)	:	abt.	130.20 meters
Breadth with fender & spud	:	abt.	48.24 meters
Depth, moulded	:	abt.	7.70 meters



Figure 2 - Provisional view of one standard element (source: Femern A/S)

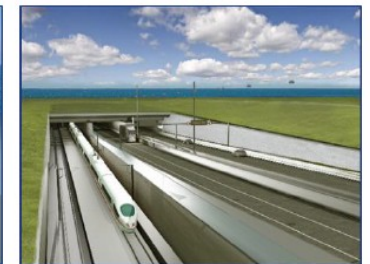


Figure 3 - Provisional view of one portal (source: Femern A/S)

HYDROTECHNICAL CONSTRUCTIONS



FORTH CROSSING BRIDGE CONSTRUCTORS

Construction and delivery of Bridge Caissons
ordered by:

"Forth Crossing Bridge Constructors" (FCBC),
Scotland.

Tonnage approximately: 4.200 T
Construction period: November
Final customer: Scottish
Government



CONVERSION
OF 4. PONTOONS
1000 tons each



THREE GATES FOR LOCK IN BREMERHAVEN

MAIN DIMENSIONS:

Length OA — 57,00 m m



PONTOON „KURT” – P 493

MAIN DIMENSIONS:

Loa— 49,8 m

Boa— 3,25 m

CRIST OFFSHORE PROJECTS



**EDVARD
GRIEG**
Total steel
construction
weight: above
3.000 ton



TIDIAL TURBINE
End-caps – Outer End-caps
each 55 ton

Center End-caps – 80
ton

Subsea base – 260 ton



SS7 -R
Diameter – 32
m,
Total Width – 15
m,
Total mass – 820
ton



PROPYLENE TANKS
5 large tanks for the
storage of propylene

Length overall – 72,13
m

Diameter – 8 m
Capacity – 3485 m³
Gross weight – 613 980
kg

RESEARCH AND DESIGN



CRIST S.A. is cooperating with leading design offices in ship design and engineering; whose area of activity includes: shipbuilding, offshore vessels, technical vessels, harbor constructions, research and development.



MANAGEMENT SYSTEM

Our company meets the requirements of:

- ISO 14001:2015 (PRS)
- ISO 9001:2015 (DNV GL)



Certificate No. NC-2353



CERTIFICATE

Issued for:

CRIST S.A.

ul. Czechosłowacka 2
81-336 Gdynia

Management Systems Certification Bureau of Polski Rejestr Statków S.A., ul. Józefa Hallera 126, 80-416 Gdańsk, certifies that the Environmental Management System of the above organization has been assessed and found to be in accordance with the requirements of:

ISO 14001:2015


Scope of certification:


CONSTRUCTION OF VESSELS AND MANAGEMENT OF PROJECTS IN CONSTRUCTION OF STEEL AND ALUMINIUM STRUCTURES FOR MARINE AND OFFSHORE SECTORS

Certificate first issue: 25.02.2015


The Certificate is valid until: 24.02.2024

Gdańsk, 25.02.2021





Certification Director
Michał Chaberski



www.prs.pl



MANAGEMENT SYSTEM CERTIFICATE

Certificate No. 242860-2017-AQ-RO-R14 Initial certification date: 27 July 2014 Valid: 28 July 2020 - 27 July 2023

This is to certify that the management system of

CRIST S.A.

ul. Czechosłowacka 3, 81-336 Gdynia, Poland

has been found to conform to the Quality Management System standard:

ISO 9001:2015

This certificate is valid for the following scope:

Construction of vessels and project management of construction of steel and aluminium structures for maritime and offshore sectors.

From 01.08.2020 Gdynia, 20 June 2020



This IFA is a signatory to the IAF MLA

For the issuing office: DNV GL - Business Assurance ul. Łódzka 64, 81-537 Gdynia, Poland



Tomas Brunder
Management Representative



Link of fullment of conditions as set out in the Certification Agreement may refer the Certificate number: 242860-2017-AQ-RO-R14 to: Certification System, 1288 ul. Sopotniańska, 101-100 Warszawa, tel. +48 22 328 28 28




CERTIFICATE

CERTYFIKAT Nr OHS-4145

CERTIFICATE No.

NINIEJSZYM ZAŚWIADCZA SIĘ, ŻE SYSTEM ZARZĄDZANIA BHP W IT IS HEREBY CERTIFIED THAT THE OCCUPATIONAL HEALTH AND SAFETY MANAGEMENT SYSTEM OF

CRIST S.A.

UL. CZECHOSŁOWACKA 3, 81-336 GDYNIA, POLAND

ORAZ NASTĘPUJĄCYCH JEDNOSTKACH OPERACYJNYCH / IN THE FOLLOWING OPERATIONAL UNITS

UL. CZECHOSŁOWACKA 3, 81-336 GDYNIA, POLAND

JEST ZGODNY Z NORMĄ / IS IN COMPLIANCE WITH THE STANDARD

ISO 45001:2018

W NASTĘPUJĄCYM ZAKRESIE DZIAŁALNOŚCI / FOR THE FOLLOWING ACTIVITIES

PROWADZENIE PROJEKTÓW W ZAKRESIE BUDOWY KONSTRUKCJI STALOWYCH ORAZ ALUMINIOWYCH DLA SEKTORA MORSKIEGO ORAZ OFFSHORE

PROJECT MANAGEMENT OF CONSTRUCTION OF STEEL AND ALUMINIUM STRUCTURES FOR MARITIME AND OFFSHORE SECTORS

Data ważności / Validity Date: 04.10.2023

Data rewizji / Revision date: 05.10.2020

Alessandro Romo
Certification EMA Region
Senior Director



RINA Services S.p.A.
Via Corsica 12 - 10128 Genova Italy




CERTIFICATE

Based on the results of certification for compliance with ISO 9001:2015 it is confirmed that:

CRIST S.A.

ul. Czechosłowacka 3, 81-969 Gdynia

has implemented and continuously improve quality management system that meets the requirements of

AQAP 2110:2016

and has ability to ensure quality using AQAP 2070, in the following operating processes:

Project management of construction of steel and aluminum structures for maritime and offshore sectors, and pressure vessels.

Meeting the requirements of AQAP 2110:2016 is equivalent to meeting the requirements of AQAP 2110 release D, version 1. Certificate No. 1423A/2020 is valid from 04.05.2020 to 03.05.2023. Initial AQAP certificate issue 04.05.2020 Edition A, date of issuing 04.05.2020.

MILITARY UNIVERSITY OF TECHNOLOGY
QUALITY CERTIFICATION CENTER
gen. Szymanowskiego 2/26, 00-908 Warsaw



Joanna Jasulska Ph.D. Eng.
Director of the QCC



ISO 14001



AC 014
EMS



CRIST S.A.

is a reliable and cooperative partner, who offers:

- Proper understanding of customer needs
- High quality
- Experience Staff
- On time deliveries
- Ability of solving technical tasks



Thank you
for your attention!

CRIST S.A.

ul. Czechosłowacka 3

81-336 Gdynia

Poland

phone: +48 58 769 33 00

fax: +48 58 769 33 01